

AUGUST 2023

SPECIAL PRICING THRU 1-22ND



BUILDING RELATIONSHIPS THAT BUILD BUSINESSES

Irr
Supply Centers

MOEN®

Chateau Chrome

One-Handle Low Arc

Bathroom Faucet

MOEL64624

\$124.00



ADA Compliant

BENEFITS

- Chrome finish is highly reflective for a mirror-like look that works with any decorating style
- One-handle lever handle makes it easy to adjust the water
- **4" Centerset design** allows for easy installation
- Aerated flow is ideal for everyday bathroom tasks, like brushing teeth and washing hands
- **Meets EPA Watersense®** criteria to conserve water without sacrificing performance
- **LIMITED LIFETIME WARRANTY**



Chateau Chrome

Posi-Temp® Eco-Performance

Tub & Shower

MOEL2353EP

\$139.00



ADA Compliant



BENEFITS

- Polished brass finish is warm and bright for a classic, highly reflective look
- Lever handle makes it easy to adjust the water
- Lifeshine® finish assures the ultimate in durability and is guaranteed not to tarnish, corrode or flake off
- Install with posi-temp® pressure balancing control valve to maintain water temperature control in the shower
- Easyclean® spray modules are rubberized, helping to prevent hard water deposit buildup
- 5 1/2" Tub spout length



Chateau Chrome

One-Handle Low Arc Kitchen Faucet

MOE7430

\$139.00



ADA Compliant



BENEFITS

- chrome finish is highly reflective for a mirror-like look that works with any decorating style
- features Duralock™ quick connect system for easy installation
- includes side spray hose for convenient, flexible cleaning at the sink



SPECIAL PRICING THRU AUGUST 1-22nd

**CUSTOMER
LOYALTY POINTS**

THE BOLD LOOK OF **KOHLER**®



Cimarron®

**Two-piece
round-front toilet 1.28 gpf**

**KOHK31641W
\$282.00**

The Cimarron® Comfort Height® toilet has become an enduring symbol of power and timeless beauty. Trusted for years by professionals and homeowners, Cimarron features Kohler's most complete flush ever, Revolution 360® flushing technology powered by the AquaPiston® flush valve. Revolution 360® flushing technology keeps your bowl cleaner longer than a conventional flush. Installation saves you time and money, too, with Kohler's patent-pending two-bolt tank-to-bowl omnidirectional leveling system.

PAIR IT WITH...

White Cachet®

**ReadyLatch®
Quiet-Close™**

round-front toilet seat

**KOHK4639W
\$37.60**

(Old Model Closeout/while supplies last)



Pennington®

**20-1/4" oval drop-in
bathroom sink**

**KOHK21964W
\$85.96**

Pennington®, a subtle oval shape and understated design, the Pennington sink complements both contemporary and traditional bathrooms. The basin's raised rim helps keep water from splashing over the side while adding a classic design touch.

FEATURED VENDOR

**CUSTOMER
LOYALTY POINTS**

SPECIAL PRICING THRU AUGUST 1-22nd



Contractor SERIES

ISE333

Garbage Disposal

3/4hp Contractor 333

\$195.00



ISEPRO1100XL

Garbage Disposal

1.1 hp Continuous

Feed Evolution Excel

\$465.00



ISEPRO750

Garbage Disposal

3/4hp Continuous

Feed Evolution Compact

\$255.00



ISEPRO880

Garbage Disposal

7/8hp Continuous

Feed Evolution Compact

\$295.00

ISEPROCCPLUS

Garbage Disposal

3/4hp Batch Feed Evolution

Cover Control Plus

\$335.00

Satisfy customer needs
with **added power** and **dependable performance**.



SPECIAL PRICING THRU AUGUST 1-22nd



WHOLE HOME UV WATER SYSTEM

CONCERNED ABOUT BACTERIA
IN YOUR WATER?

PERFECT FOR YOUR HOME OR COTTAGE.

ULTRAVIOLET WATER SYSTEM,
10GPM 30K TROJANUVMAXD

TROUVMAXD—\$495.00

Features


- * Validated through microbial testing to inactivate microorganisms.
- * Easy to maintain- audible lamp replacement reminder & countdown timer w/ digital display.
- * Space efficient- high UV output lamp technology allows for a smaller footprint.



**WHILE SUPPLIES LAST
LIMITED QUANTITIES!**

SPECIAL PRICING THRU AUGUST 1-22nd

**CUSTOMER
LOYALTY POINTS**

A circular graphic with a background of green grass. Inside the circle, the text "99.97% CLEANER AIR" is written in a bold, blue, sans-serif font. The circle has a dotted red border.

99.97%
CLEANER
AIR

Lifebreath **205 MAX** Residential Heat Recovery Ventilator (HRV)

Highest efficiency single core HRV on the market. Top port design for flexible installations, with door port balancing featuring the high efficiency HEX core.

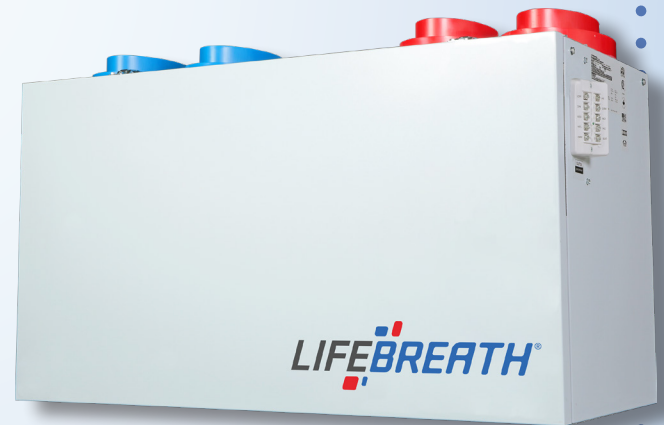
LIF205MAX **\$1099.00**

**LIFEBREATH HEPA AIR CLEANERS
ARE A LOW MAINTENANCE
NON-TOXIC PURIFIERS.**

Warranty:

Units carry a lifetime warranty on the HRV core and a **5 year replacement parts warranty.**

- *High Efficiency Hex Core.*
- *Door Port Balancing & Adjustable Dampers.*
- *Excellent low temperature performance.*
- *Controller with 5-speed, 4-mode operation, included.*

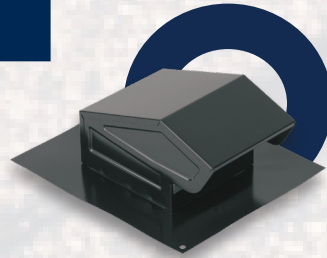


In winter, the HRV's patented aluminum core transfers heat from outgoing, stale air to incoming fresh air so that it doesn't need to be fully reheated. In summer, the HRV works in reverse, removing heat from incoming air, helping your home stay cool.

BROAN®



Broan-NuTone® Steel Roof Cap



Broan-® 636 Roof Cap to provide reliable rooftop ventilation. Features a black enamel finish and is designed for use with 3 in. or 4 in. round ducts. Includes a built-in back-draft damper, and protective bird screen to prevent small pests from entering duct.

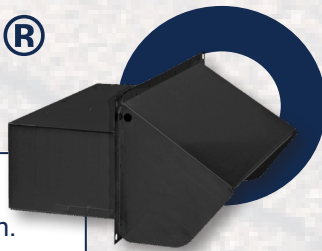
**BRO636
\$21.00**

Broan-NuTone® 634 Roof Cap to provide reliable rooftop ventilation. Features a black enamel finish and is designed for use with 3-1/4" x 10" or up to 8" round duct. Includes a built-in back-draft damper, and protective bird screen to prevent small pests from entering duct.

**BRO634
\$35.00**

Broan-NuTone® Steel Wall Cap

Broan-NuTone® 639 Wall Cap to provide reliable wall ventilation. Features a black enamel finish and is designed for use with 3-1/4" x 10" duct. Includes a built-in back-draft damper, and protective bird screen to prevent small pests from entering duct.



**BRO639
\$34.00**

Broan-NuTone® Wall Cap

885AL and 885BL are used for 3-Inch and 4-Inch round duct.



Maximize the air and sound performance of your Broan® ventilation fan or range hood using one of our wide variety of ducting accessories!

**BRO885AL
\$35.00
BRO885BL
\$27.00**

Broan® Bathroom Exhaust Fan, ENERGY STAR®, 50-110 CFM

Broan® AE50110DC Flex DC™ Series Exhaust Bath Fan, ENERGY STAR® offers easy, room side installation, with "No Attic Access Required". Ceiling mounted ventilation fan features foldable mounting ears and EZ Duct connector for easy installation. New duct damper technology provides a tighter seal, resulting in reduced warm and cold air backdrafts. This energy efficient fan operates at a selectable **CFM range of 50-80-110** at a quiet operation. Available with or without light.



**BROAE50110DC
\$132.00
BROAE50110DCL
\$174.46**



SPECIAL PRICING THRU AUGUST 1-22nd



Honeywell Home

resideo

SHUT DOWN LEAKS, RIGHT AT THE SOURCE.

BRAUKMANN L5 WIFI WATER LEAK SHUTOFF VALVE.

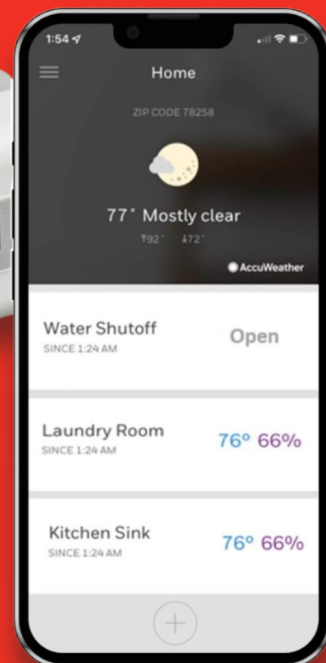
When paired with WiFi Leak Detectors, as soon as water is detected, the L5 WiFi Water Leak Shutoff Valve will shut off the water to reduce potential water damage.

RESVWS02Y1 — \$212.50
WIFI ACTUATOR W/ 1" NPT BALL VALVE

RESVWS02Y114 — \$265.75
WIFI ACTUATOR W/ 1 1/4" NPT BALL VALVE

RESVWS02Y12 — \$175.25
WIFI ACTUATOR W/ 1/2" NPT BALL VALVE

RESVWS02Y34 — \$183.75
WIFI ACTUATOR W/ 3/4" NPT BALL VALVE



L1 WIFI WATER LEAK DETECTOR SINGLE PACK

Help save your home from potential water damage with the Resideo L1 WiFi Water Leak and Freeze Detector. Easy to install and WiFi-ready.

RESCHW3610W8001 — \$55.00EA

WLD3CABLE

WIFI WATER LEAK DETECTOR ACCESSORY CABLE SENSOR (5-FT)

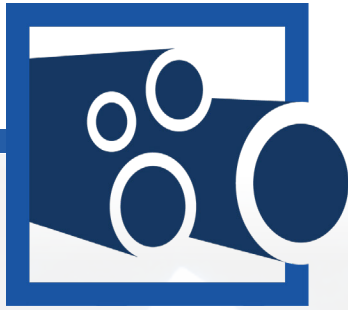
This 5-ft cable senses water along its entire length. Extend the reach of a Water Leak and Freeze Detector beyond the base unit.

This Cable Sensor detects water along its entire surface. Connect additional cables together to expand the water leak detector's coverage area for utility rooms or basements.

RESWLD3CABLE — \$11.50 EA



SPECIAL PRICING THRU AUGUST 1-22nd



UNITED PIPE & STEEL



We have the Domestic Seamless Steel Pipe you need, when you need it.

United Pipe & Steel is the largest master distributor of pipe & tube products in the United States.

DOMESTIC SEAMLESS STEEL PIPE

BLKP12-10	\$26.18	Black Cut Pipe, 1/2"x10' Threaded Both Ends
BLKP34-10	\$38.24	Black Cut Pipe, 3/4"x10' Threaded Both Ends
BLKP1-10	\$47.61	Black Cut Pipe, 1"x10' Threaded Both Ends

Seamless Steel Pipe

- Schedule (SCH) –SCH 40, SCH80
- Sizes – 1/2" through 10" IPS
- Lengths –21'
- End Finish – Plain End (PE)
- Coating – Black Mill Coating, and Blue UV Coating (Blue Diamond®) with Yellow Stencil
- Specs – ASTM A106-B; ASME A106-B

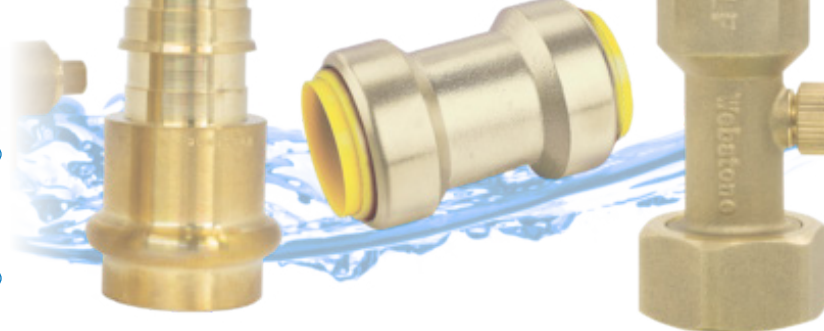


SPECIAL PRICING THRU AUGUST 1-22nd

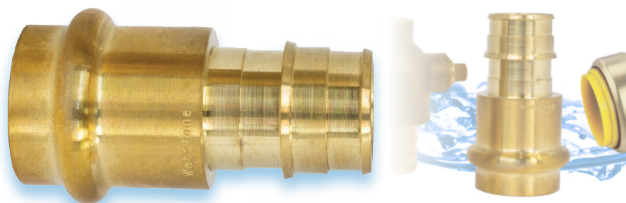
 **CUSTOMER
LOYALTY POINTS**

Webstone®

a brand of **NIBCO®**



Forged DZR Brass Transition Fitting



Coupling, 1/2"
Cop X Cold Press F-1960
RPPWIR12

Coupling, 3/4"
Cop X Cold Press F-1960
RPPWIR34

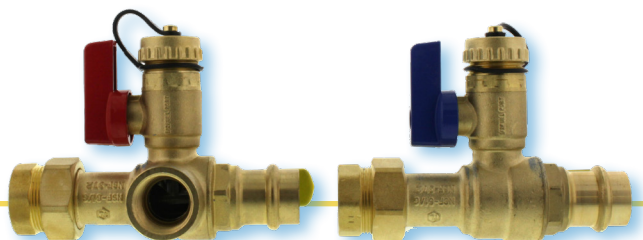
Coupling, 1"
Cop X Cold Press F-1960
RPPWIR1

H-36802W SERIES

Overview

- Easily Transition Between Press and PEX
- Saves Time
- Replaces Components
- Eliminates Leak Paths
- Models available to satisfy all state and federal low-lead laws
- Available in PRS x PEX
- Certified to NSF/ANSI 61 & 372
- NSF/ANSI 14

Tankless Water Heater Service Valves



**3/4" Press Tankless Water
Heater Kit w/150# PSI Vlv**
FLGH84443WPR

8444W SERIES

The ISOLATOR
UNI-FLANGE BALL VALVE®

\$99 SALE
ONLY FOR **FLGH84443WPR**
Special 1-22nd

Nu-Calgon

Nu-Blast

CAL429075 \$15.27

FEATURES

- High solvency cleaning power
- Non-flammable
- Non-conductive
- Specially designed valve and dip tube provide exceptionally high pressure delivery
- No rinse required, cleaning solvent evaporates completely & leaves no residue



Evap-Fresh No Rinse Aerosol

CAL416675 \$12.07

FEATURES

- Deodorizer
- Lemon scent
- EPA registered
- Mildewstat (on hard inanimate surfaces)
- Fungicide (against pathogenic fungi)
- Works upside down for hard to reach areas



Packaging Size

Part

18 ounce can

4290-75

Packaging Size

Part

18 ounce can

4166-75

EVAPORATOR COIL CLEANER AND DISINFECTANT



This product is a disinfectant cleaner for *small air conditioner cooling coils and refrigeration equipment, refrigerator, or freezer evaporative coils.*

HIGH SOLVENCY CLEANING POWER
HIGH PRESSURE BLASTING NOZZLE
NONCONDUCTIVE AND NONFLAMMABLE
GREAT ON STUBBORN SOILS LEAVES
NO RESIDUE



Evap Foam No Rinse

CAL417175 \$10.78

FAQS

- Pleasant lemon scent
- Cleans and deodorizes
- Self-rinsing, fast-breaking foam
- Ideal for kitchen applications
- Biodegradable and NSF Registered*
- Easily sprayed from any angle... right side up or upside down



Blackhawk

CAL412775 \$8.80

FEATURES

- Safe for Cleaning HVAC/R Coils in Food Processing Areas
- Does Not Produce Objectionable Fumes
- Metal/Plastic Safe
- Non-Rinse for Evaporators
- Nonflammable
- Biodegradable



Packaging Size

Part

18 ounce can

4127-75

Corrosion, where?

The product's **fast-breaking foam** is completely **self-rinsing**. Simply spray Evap Foam on the coil and the foam will wash the emulsified matter off.



AN EXPANDING FOAM, NON-FRAGRANCE COIL CLEANER FOR CLEANING HVAC/R EQUIPMENT IN FOOD PROCESSING AREAS

SPECIAL PRICING THRU AUGUST 1-22nd

FEATURED VENDOR

**CUSTOMER
LOYALTY POINTS**

CUSTOMER LOYALTY POINTS

Kohler	150 pts. per \$300 purchase
UEI	100 pts. per \$50 purchase
Ritchie Engeneering	150 pts. per \$75 purchase
Nu-Calgon	100 pts. per \$50 purchase

JOIN OUR LOYALTY PROGRAM!

REMINDER
FROM JULY 1ST THRU SEPT 2ND
ALL IRR SUPPLY LOCATIONS WILL BE CLOSED ON SATURDAYS!
Emergency Openings Will Still Be Available
For more info contact store manager with any questions

BINGHAMTON
TRADE SHOW
AUGUST 11TH

59 CHENANGO BRIDGE ROAD, NY 13901
BINGHAMTON NY 13901

CONNECT WITH VENDORS

8AM-4PM

**BBQ LUNCH
& PRIZES**

SCAN THE QR CODE
FOR UPCOMING
EVENTS!

